

Identify, Isolate, Inform

Emergency Department Evaluation and Management of Patients Under Investigation (PUIs) for MERS Coronavirus

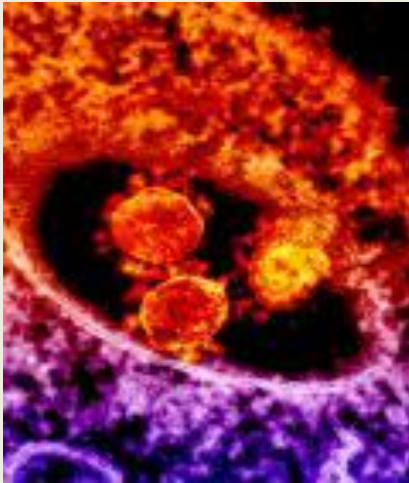
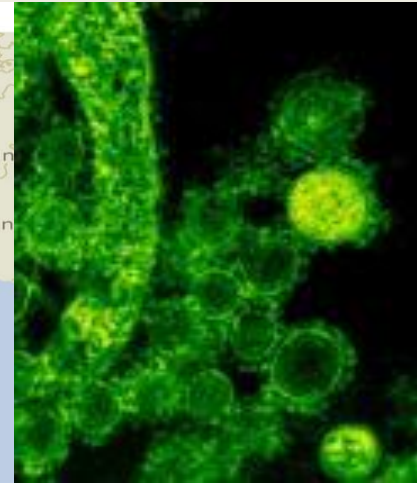


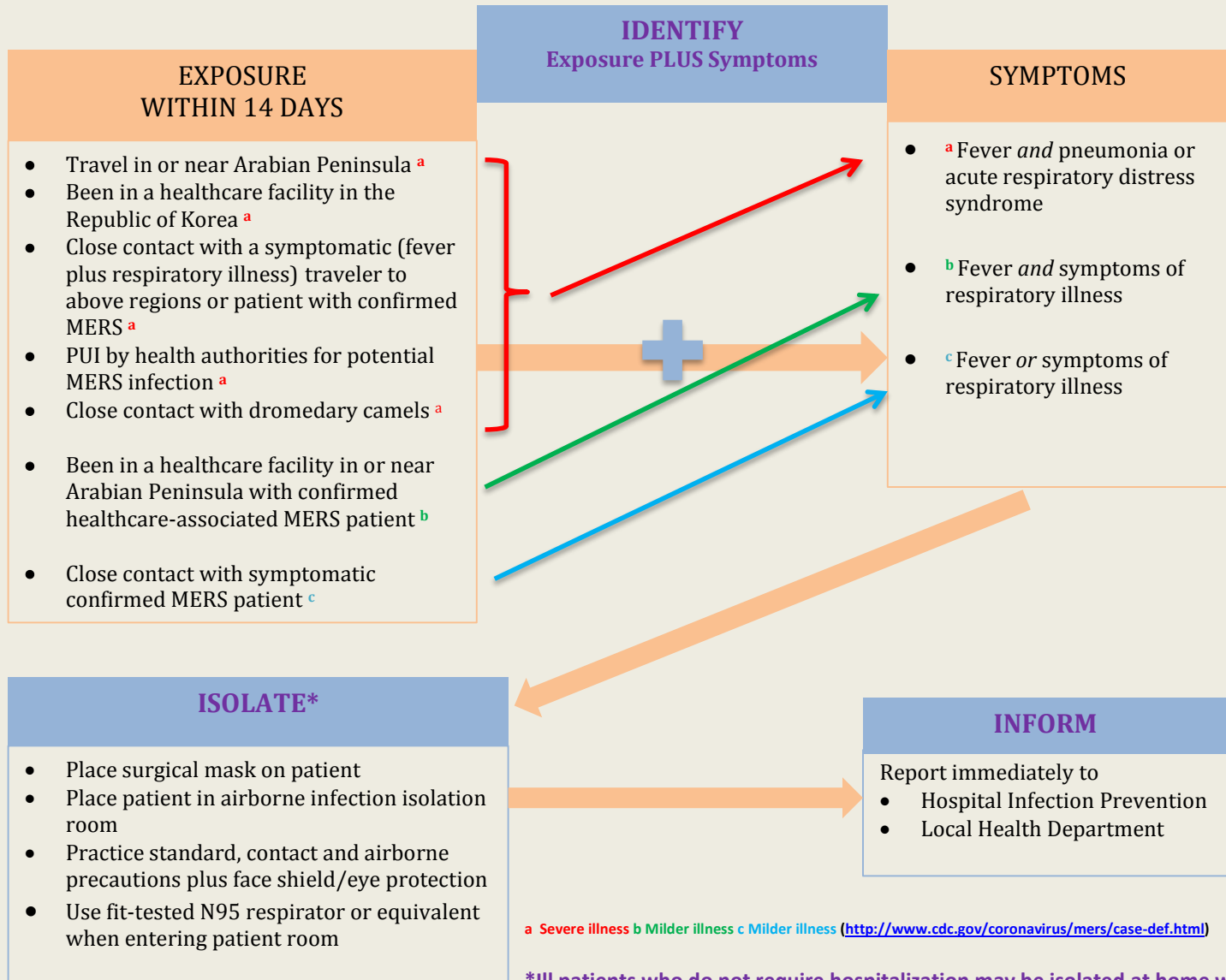
Photo Credits

National Institute of Allergy and Infectious Diseases



<http://wwwnc.cdc.gov/travel/notices/alert/coronavirus-saudi-arabia-qatar>

<http://phil.cdc.gov/phil/quicksearch.asp>



^a Severe illness ^b Milder illness ^c Milder illness (<http://www.cdc.gov/coronavirus/mers/case-def.html>)

***Ill patients who do not require hospitalization may be isolated at home while being evaluated for MERS infection.**